



Hollystitches Road, Nuneaton, CV10 9QA

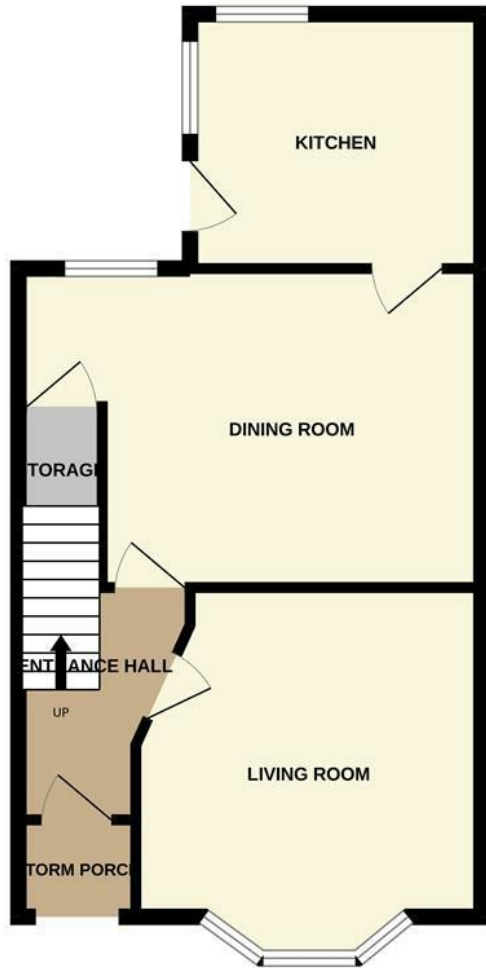
Property Description

*** HOT HOLLY *** This semi detached home comes to the market for let. Holly Stitches road is a much improved three bedroom home with living room, dining room and modern kitchen with appliances. With two double bedrooms and one single to the first floor and modern shower room accompanied by a good sized rear garden and off road parking. Having been newly plastered, redecorated and with new carpets added, this home is ready to go. Offered with some furniture, kitchen appliances and available NOW. EPC tbc.

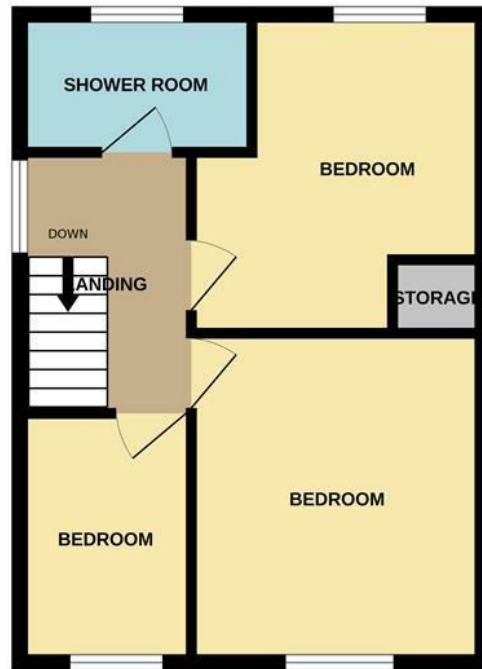




GROUND FLOOR
486 sq.ft. (45.1 sq.m.) approx.



1ST FLOOR
383 sq.ft. (35.6 sq.m.) approx.



TOTAL FLOOR AREA : 869 sq.ft. (80.8 sq.m.) approx.
This floor plan is not to scale and is for guidance purposes only
Made with Metropix ©2022

Key Features

- Semi detached Home
- Three bedrooms
- Modern fittings
- Shower room
- Modern Kitchen
- Solar panels
- part furnished
- EPC - D & Council Tax Band B
- Avail Now

PCM
£950 PCM

